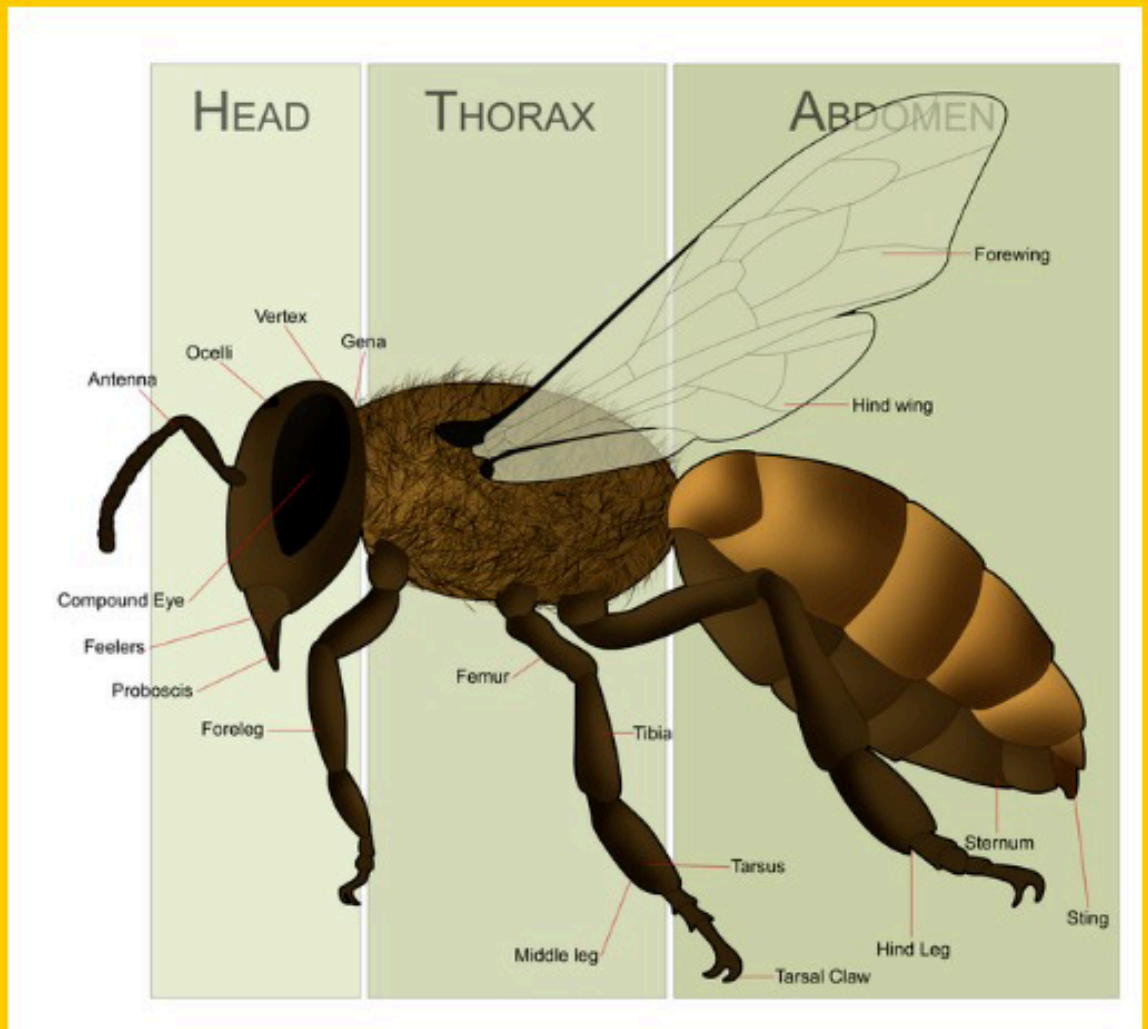


**Bonus Super Words**  
**Anatomy of a Honeybee (Bee parts)**

<b>Exoskeleton</b>	hard outer shell
<b>Thorax</b>	middle part of body where wings and legs attach
<b>Abdomen</b>	posterior part of insect's body
<b>Ocellus</b>	one of two types of eyes, detects motion
<b>Ocelli</b>	more than one Ocellus
<b>Antennae</b>	long, thin sensory appendages on insect head; feelers
<b>Labrum</b>	mouthpart that helps handle food
<b>Mandible</b>	strong outer mouth part; protects proboscis
<b>Maxilla</b>	mouthpart beneath mandible
<b>Labial Palp</b>	mouthpart to feel and taste
<b>Proboscis</b>	tubular mouthpart on insect to suck liquids
<b>Glossa</b>	hairy tongue to gather nectar
<b>Forewings</b>	wings closest to the head
<b>Hind wings</b>	wings farthest from head
<b>Foreleg</b>	legs closest to head
<b>Middle legs</b>	legs between foreleg and hind leg
<b>Hind legs</b>	legs farthest from head
<b>Coxa</b>	first segment of leg
<b>Trochanter</b>	second segment of leg
<b>Femur</b>	third segment of leg
<b>Tibia</b>	fourth segment of leg
<b>Metatarsus</b>	fifth segment of leg
<b>Tarsus</b>	last segment of the leg that touches walking surface
<b>Pretarsus</b>	Tarsus claw
<b>Stinger</b>	sharp organ that injects venom
<b>Hind wings</b>	wings farthest from head
<b>Trichromatic</b>	sees three primary colors
<b>Corbicula</b>	pollen basket
<b>Corbiculae</b>	more than one pollen basket



From: Wikipedia